

MySQL Cloud Service Deep Dive

ORACLE®

Copyright © 2016, Oracle and/or its affiliates. All rights reserved.



Safe Harbor Statement

The following is intended to outline our general product direction. It is intended for information purposes only, and may not be incorporated into any contract. It is not a commitment to deliver any material, code, or functionality, and should not be relied upon in making purchasing decisions. The development, release, and timing of any features or functionality described for Oracle's products remains at the sole discretion of Oracle.

Oracle MySQL Cloud Service

The World's Most Popular Open Source Database in the Oracle Cloud



Oracle MySQL Cloud Service enables you to rapidly, securely and cost-effectively develop & deploy modern applications powered by the World's Most Popular Open Source Database



Complete

Open

Secure

Choice

ORACLE®

Copyright © 2016, Oracle and/or its affiliates. All rights reserved. |

A photograph of two men in an office setting. One man, with glasses and a beard, is smiling and looking at a laptop. The other man is partially visible in the background, also smiling. They are sitting at a desk with a laptop and some papers. An orange banner is overlaid on the left side of the image.

Complete

- Spanning all layers of the cloud: IaaS, PaaS, SaaS
- Every layer...integrated
- Based on our foundational infrastructure platforms; cloud equivalent, cloud ready
- Reduces complexity
- Every category and stakeholder
- Consumption models for all



Open

- An open, standards-based platform
- Supports all workloads, applications, languages, open source, OS platforms, data types
- For everyone to build on, customers & partners
- Integrated with Oracle apps and the application ecosystem

A hand is holding a tablet. The screen shows a data table with columns for 'id', 'Name', 'Age', 'Gender', 'City', and 'Country'. Below the table is a pie chart with several segments. The word 'Secure' is overlaid on the image in a white font.

Secure

- Offers protection for every layer
- Physical datacenter access
- Encryption of data at rest, in motion
- App access; privileged users controls
- Masking, redacting sensitive data
- Identity management



Choice

- Deployment opportunities—private cloud, public cloud, public cloud on premises (OCM) & hybrid cloud
- Same environments preserve existing IT investments, skills
- Migration and adoption paths—infrastructure, workloads, apps, integrations, extensions
- Broad ecosystem of partners

MySQL Cloud Service



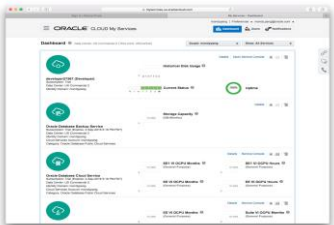
+



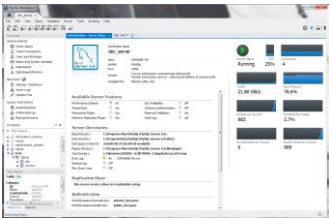
- Simple
 - Quickly provision MySQL database instances with only a few clicks
- Automated
 - Database management made easy with tools that automate administrative tasks
- Integrated
 - Integrated with Oracle Cloud Services for quick development and deployment
- Enterprise Ready
 - Oracle's proven MySQL Enterprise Edition for performance, security & uptime`

MySQL Cloud Service: Product Overview

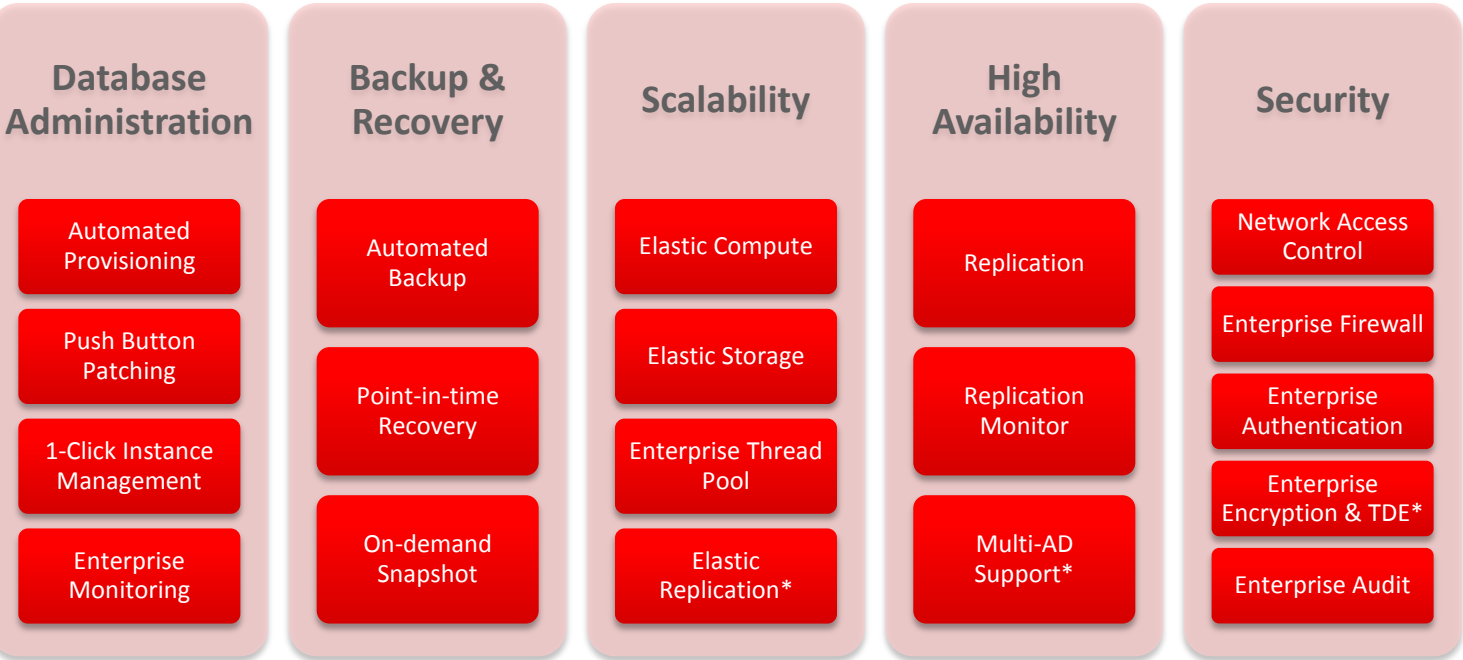
Management Access



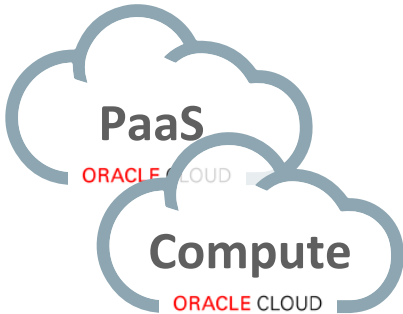
Oracle Cloud Console



MySQL Tools



Data Access



In Short



- Oracle Public Cloud
- Database as a Service (PaaS)
- MySQL with the annoying bits managed for you:
 - Backups
 - Patches
 - Monitoring
 - etc.

What version of MySQL is it?

- Powered by MySQL 5.7 Enterprise Edition
- Same software used in cloud as on premise
 - You will be able to migrate workloads in both directions
- Optimized configuration
 - In my.cnf file
 - In compute and storage

Platform

Oracle Cloud Platform as a Service

Oracle Cloud is the industry's broadest and most integrated public cloud. It offers best-in-class services across software as a service (SaaS), platform as a service (PaaS), and infrastructure as a service (IaaS), and even lets you put Oracle Cloud in your own data center. Oracle Cloud helps organizations drive innovation and business transformation by increasing business agility, lowering costs, and reducing IT complexity.



Software as a Service

Reimagine your business processes and experiences

Under the Hood

Optimized Configuration of MySQL

- InnoDB IO Configuration optimized
 - Number of IO threads
 - O_DIRECT
 - Redo log size and buffer
 - Plus more...
 - Thread Pool Enabled By Default
- Scalable Auto Increment
 - Memory optimized to compute shape
 - Buffer Pool
 - *Plus more...*

Optimized Compute and Storage

- Oracle Linux 6
 - UEK
 - MySQL task priority
 - Memlock
 - ext4 Filesystem
- Storage is powered by ZFS Appliances
- Optimized for latency:
 - Binary Logs
 - Redo Logs
- Optimized for throughput:
 - Data files

Optimized Configuration

Functionality

- GTIDs Enabled by Default
- UTF8 By Default
- Event Scheduler Enabled
- Physically Separate Undo Log
 - With automatic truncation enabled



Oracle MySQL Cloud Service

Services

Activity

SSH Access

Welcome!

Summary	2	2	15 _{GB}	270 _{GB}	2	-
	Services	OCPUs	Memory	Storage	Public IPs	

Services

Search by service name

As of Sep 17, 2016 7:48:05 AM UTC

Create Service

	wordpressdb	Subscription: Hourly Version: 5.7.13	Edition: Enterprise Edition Created On: Sep 17, 2016 7:32:44 AM UTC	OCPUs: 1 Memory: 7.5 GB Storage: 135 GB	
	test1	Subscription: Hourly Version: 5.7.13	Edition: Enterprise Edition Created On: Sep 16, 2016 6:31:02 PM UTC	OCPUs: 1 Memory: 7.5 GB Storage: 135 GB	

Backup

- Fully Managed:
 - On Demand
 - Scheduled
 - Incremental
 - Powered by MySQL Enterprise Backup
- Default
 - Weekly full backup
 - Daily incremental backup
 - 30 day retention (in Cloud Storage)
 - 7 day retention (locally)
 - **Access to Raw Backup Files**

User Initiated Patching

- Time maintenance to opportune time
- Click of a Button
- Delay upgrade if desired
 - Very occasionally patches need to change behavior
 - Security being example
- Automatic backup before patching
- Rollback option if required



MySQL Enterprise Edition

- MySQL Enterprise **Firewall**
 - Block SQL Injection Attacks
 - Intrusion Detection
- MySQL Enterprise **Encryption**
 - Public/Private Key Cryptography
 - Asymmetric Encryption
 - Digital Signatures, Data Validation
- MySQL Enterprise **Authentication**
 - External Authentication Modules
 - Microsoft AD, Linux PAMs
- MySQL Enterprise **Audit**
 - User Activity Auditing, Regulatory Compliance
- MySQL Enterprise **Monitor**
 - Changes in Database Configurations, Users Permissions, Database Schema, Passwords
- MySQL Enterprise **Backup**
 - Physical backup ideal for larger databases
 - Verifies data as it copies
- MySQL **Thread Pool**
 - Improves performance on high concurrency workloads



More information available at : <http://www.mysql.com/products/enterprise/>

Moving Data In and Out

morgo@whitebox: ~/Documents/src/morgo/opc/wordpress

→ wordpress

SSH Access

Oracle Public Cloud Exclusive Feature

- Log into your MySQL Cloud Service Instance
- Works well with MySQL Workbench
 - SSH Tunnel direct from Workbench to Cloud Service
 - Port 3306 does not need to be exposed



MySQL Root Access

- Connect via Command Line or Workbench
- Perform Administration tasks as MySQL root:
 - Set offline mode, read only



Replication



- Binary log already enabled
 - Service already fully configured to be a master
 - Binary log defaults to 90 day retention
- Can replicate to/from on premise
 - Restricted only by firewall rules
- Can replicate to other instances of MySQL Cloud Service

Scaling Up / Down



Oracle MySQL Cloud Service

Services

Activity

SSH Access

Welcome!

Summary	2	2	15 _{GB}	270 _{GB}	2	-
	Services	OCPUs	Memory	Storage	Public IPs	

Services


Search by service name

As of Sep 17, 2016 8:39:01 AM UTC

Create Service

	wordpressdb	Subscription: Hourly Version: 5.7.13	Edition: Enterprise Edition Created On: Sep 17, 2016 7:32:44 AM UTC	OCPUs: 1 Memory: 7.5 GB Storage: 135 GB	
	test1	Subscription: Hourly Version: 5.7.13	Edition: Enterprise Edition Created On: Sep 16, 2016 6:31:02 PM UTC	OCPUs: 1 Memory: 7.5 GB Storage: 135 GB	

Restoring from Backup

 Oracle MySQL Cloud Service

Services

Activity

SSH Access

Welcome!

Summary

2	3	22.5 _{GB}	270 _{GB}	2
Services	OCPUs	Memory	Storage	Public IPs

Services

Search by service name

As of Sep 17, 2016 8:48:19 AM UTC

Create Service

	wordpressdb	Subscription: Hourly Version: 5.7.13	Edition: Enterprise Edition Created On: Sep 17, 2016 7:32:44 AM UTC	OCPUs: 2 Memory: 15 GB Storage: 135 GB
	test1	Subscription: Hourly Version: 5.7.13	Edition: Enterprise Edition Created On: Sep 16, 2016 6:31:02 PM UTC	OCPUs: 1 Memory: 7.5 GB Storage: 135 GB

What's next?

Integrated Cloud

Applications & Platform Services

ORACLE®